

DEBRIS PICKUP SAFETY TIPS

Please include this information in your daily Job Safety Plans



SHOCK HAZARD

Watch for overhead power lines while using equipment to remove debris. Energized power lines could also be concealed by debris and fallen trees.



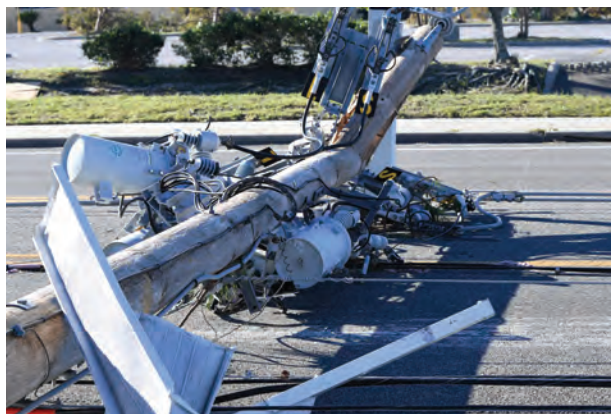
SHOCK HAZARD

Treat any downed line or wire as if it is energized because you can't tell by looking if a downed wire is live or not.



SHOCK HAZARD

Do NOT pick up any utility equipment. Some utility equipment (like capacitors, capacitor banks and transformers) may still contain a dangerous charge.



CAUTION

Do not cut cable or fiber optic lines. Cable or fiber lines can be anywhere. They may be suspended between poles, partially suspended, on the ground or underground.



SHOCK HAZARD

Do not make contact with padmount transformers when picking up debris.



CAUTION

All debris should be stacked AT LEAST 10' away from electrical equipment such as power lines or padmount transformers. Do not place debris on top of green padmount transformers or pedestals.

